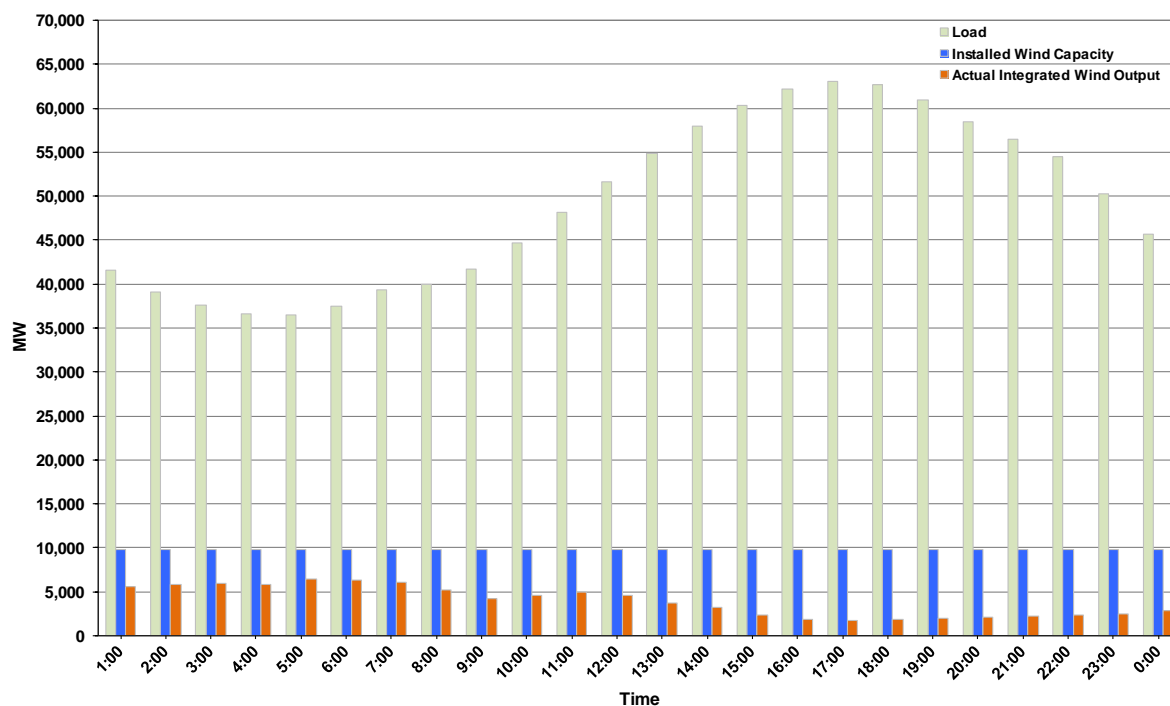




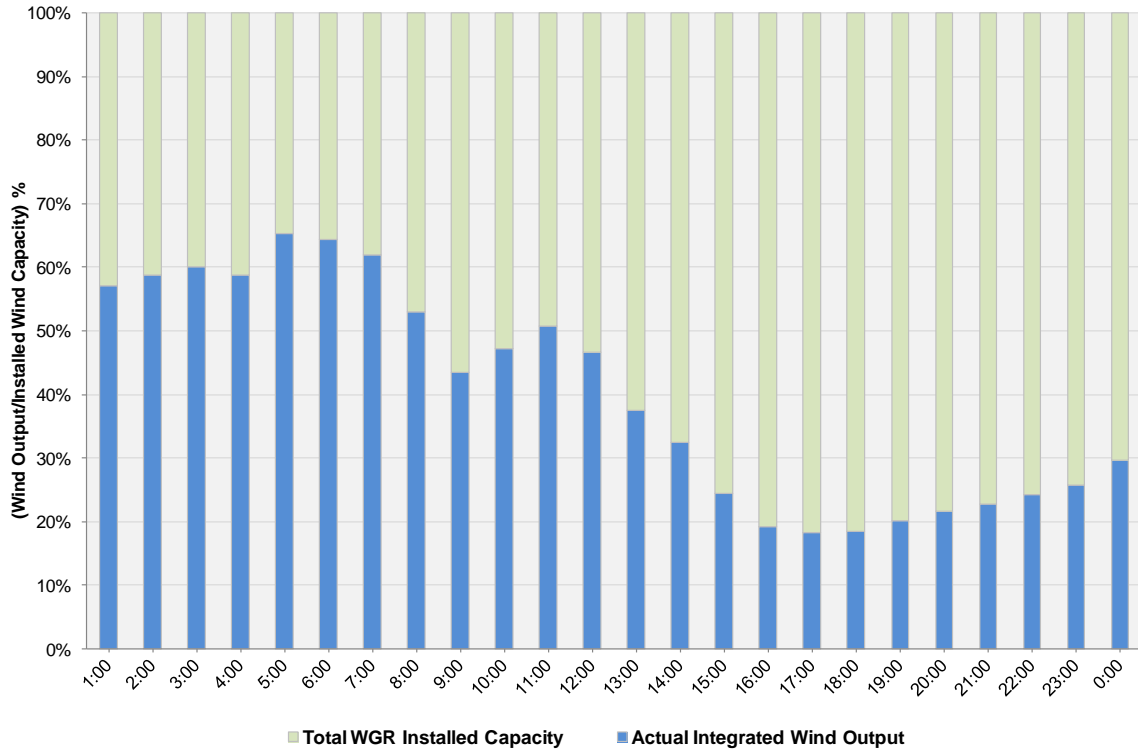
## ERCOT Grid Operations Wind Integration Report: 07/30/2013

Peak Load	<b>63,033 MW</b>
Load Peak Hour (HE)	<b>17</b>
Wind over Peak	<b>1,782 MW</b>
Wind Record 05/02/13	<b>9,674 MW</b>
Max Wind Value	<b>6,519 MW</b>
Wind Peak Time	<b>04:35</b>
Wind Integration %	<b>17.89%</b>

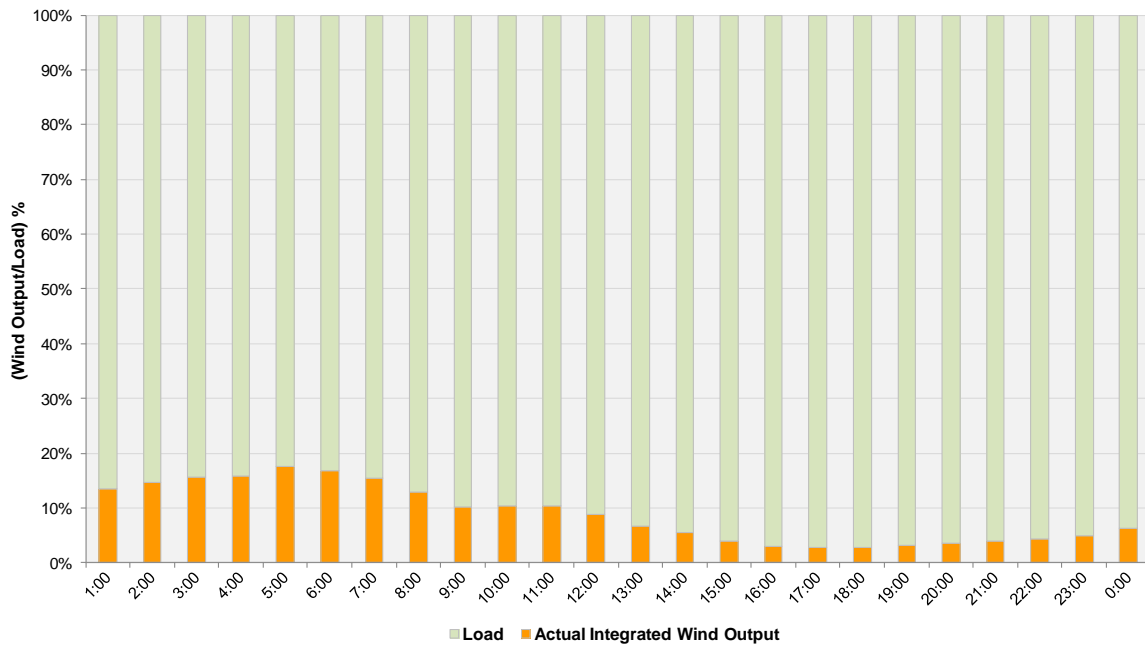
**Hourly Average Actual Load vs. Actual Wind Output  
07-30-2013**



**Actual Wind Output as a Percentage of the Total Installed Wind Capacity**  
**07-30-2013**



**Actual Wind Output as a Percentage of the ERCOT Load**  
**07-30-2013**



ERCOT Load vs. Actual Wind Output 7/23/2013 - 7/30/2013

